



ORANGE COUNTY GOVERNMENT

***DISTRICT 2* NEIGHBORHOOD LEADERS MEETING**

PRESENTED BY:

Christine Moore

County Commissioner

Orange County District 2

04/20/2023



Meeting Agenda

1. Chat & Cheesecake 6:00
2. Corridor Chief Recognition 6:30
3. Speaker Presentations: 6:35
 - Recognition of active Corridor Chiefs – Cmsr. Christine Moore
 - Corridor Chief Report- Rick Lippert, Corridor Chief
 - Safety at home- CPTED- Master Deputy Stan Murray, OCSO
 - Sustainability – treating invasives – Beth Jackson, OC EPD
 - Infrastructure – Vision Zero – Brett Blackadar, OC Public Works Deputy Director
 - Social health of neighborhood – Lindsey Smestad – Principal, POL, and HOA leader
 - Neighborhood Economics – Orlando Board of Realtor Board Member

District 2 Website



Join the Group!

People of District 2 encourage residents to join their area groups, get involved in area clean ups and events and attend quarterly District 2 meetings.

[SIGN UP](#)



Presented by Sue Henesy

Corridor Chief report



<https://vimeo.com/818274981/cb8ebb1153>



Presented by Rick Lippert

Sheriff John Mina Orange County Sheriff's Office



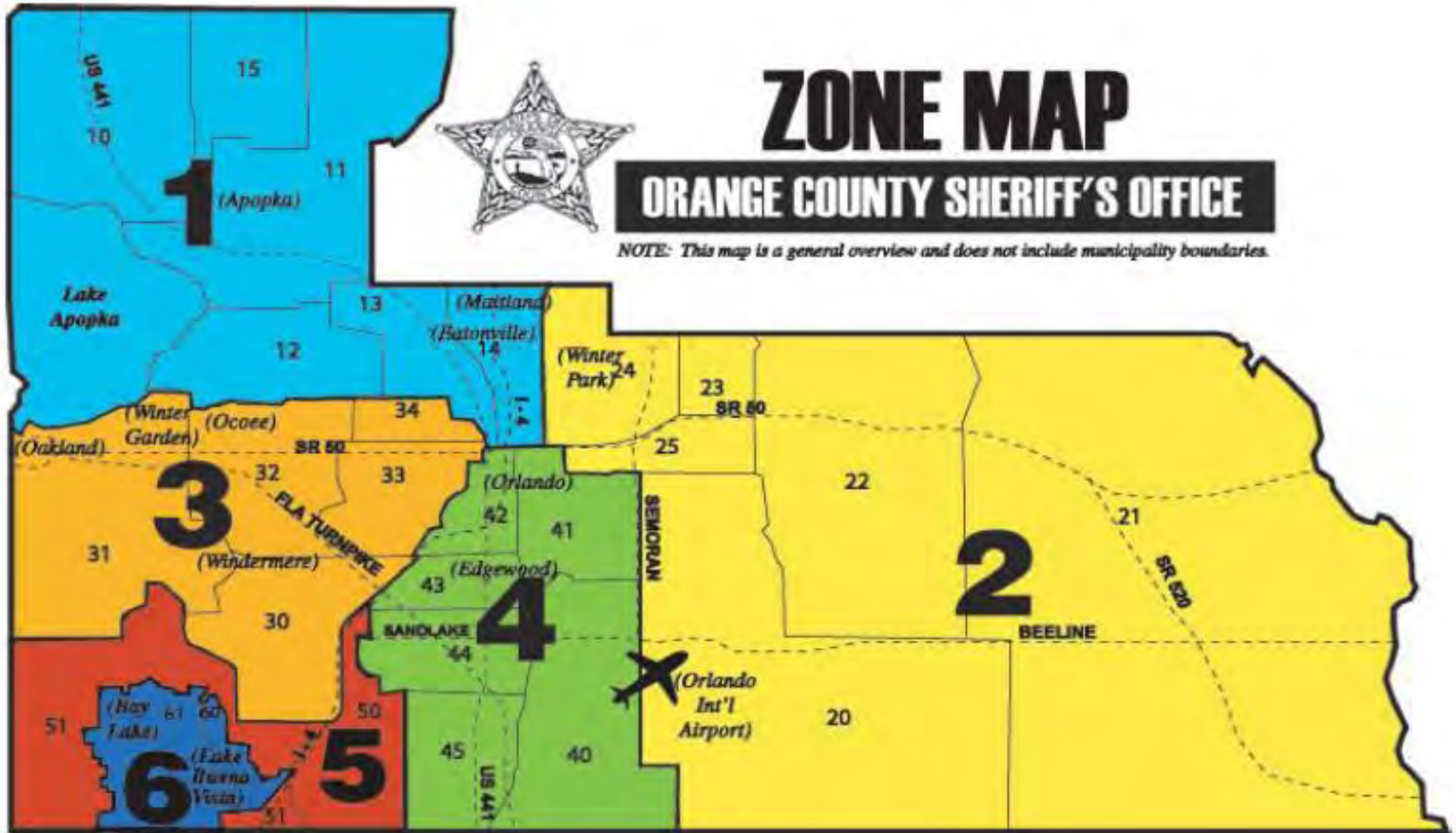
Safe Home Presentation



ZONE MAP

ORANGE COUNTY SHERIFF'S OFFICE

NOTE: This map is a general overview and does not include municipality boundaries.



Sector 5 & 6

International Drive / Walt Disney



Master Deputy Stanley Murray- 28 years

22 year retired military veteran

U.S. Navy Police Instructor: Anti-Terrorism

Florida Crime Prevention / CPTED Practitioner

Florida Intelligence Liaison Officer

Work / Worship Place Violence SME

Victim Services Advocate Practitioner

Florida Crisis Response Team Member

Critical Incident Stress Management Member

Senior Pastor Mt. Zion Tabernacle Church

Visit our Website

▶ www.ocso.com

To find your Crime Stats Info

You are here: [Crime Information](#)

[Login](#)

- Active Warrants
- Agency Directory
- Child Safety Village
- Civilian Academy
- Crime Information**
- CrimeLine
- Crime Prevention
- Disaster Preparation
- Downloads
- Employment Info
- En Espanol
- FAQ's
- File a police report
- Legislative Update
- Media Relations
- Missing Persons
- Off-Duty Services

Property Crimes and Robberies in your Zone

The accuracy of this information is based solely on the reports received by the Crime Analysis Unit during the specified time periods.

The information is based on initial complaints and does not reflect the following:

- UCR (Uniform Crime Report) reporting or statistics
- Number of Arrests, cases that are Unfounded or cases that are reclassified.

The report below covers Property Crimes and Robberies in your Zone. The report covers the last 30 days ago.

If you need additional property crime or robbery information covered on this report please call the Crime Analysis Unit at 7260. Fees may apply for additional information in excess of 119.

If you are looking for statistics for all crimes, or for more than property crimes and robberies, please call the Crime Analysis Unit at 407-254-7280.

Child Safety Village

Civilian Academy

Crime Information

CrimeLine

Crime Prevention

Find Your Zone

Enter an address below to find out its zone

Street Number

Street Name

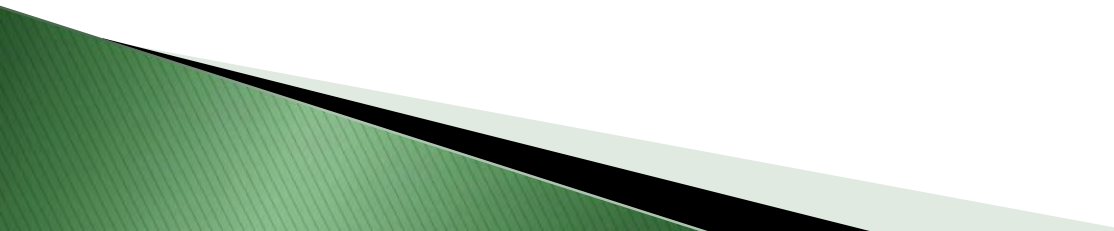
Pre-Direction

Street Type

Property Crimes and Robberies

Zone

How do we combat crime?

- ILP – Intelligence sharing
 - Coordinated Crime Control
 - Identified through Crime Analysis
 - Target crime patterns
 - Understanding crime trends
 - Daily, weekly, bi-weekly updates
 - New technology at minimal costs
- 



100% anonymous

give tips 3 ways →

1
call
800.423.TIPS
no caller ID
no recorded calls

2
visit
crimeline.org
give a tip
anonymously

3
text 'crimeline'
plus your tip
information to
CRIMES (274637)

CRIMELINE
800.423.TIPS
800.423.8477

- 100% Anonymous
- Never Testify
- You Get a Tip Personal Number
- You Could Get a Cash Reward
- 800-423-TIPS or 800-423-8477

DESIRE

ABILITY



OPPORTUNITY

Shrubbery & Trees



- ▶ Shrubbery & trees can be used as concealment for an intruder
- ▶ The 6'2 foot rule should be observed
- ▶ Trim from window area
- ▶ Trim from Door and Entry area
- ▶ Natural Surveillance – Neighbors, passersby and Police Officers can observe any criminal activity that may occur.



Shrubbery & Trees



Excessive
Shrubbery & Trees



Shrubbery & Trees



**Recommended
Shrubbery and
Trees**



Lighting



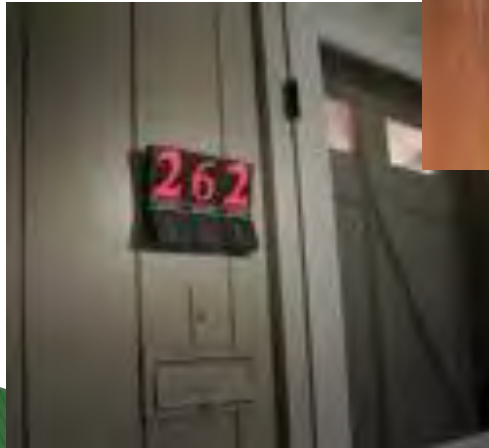
Lighting







Residence Number



1. Make sure house number are readable from the street; day or night.
2. House number should be painted a contrasting color or made larger in order to increase their readability
3. This will dramatically assist fire, Police and ambulance personnel in locating address

Doors

There are basically four types of exterior doors found on most residences:



- ▶ Hollow Core
- ▶ Solid Core
- ▶ Metal
- ▶ Double Doors / French

Double Doors & French Door



Double Doors



French Doors

- Although decorative, these types of doors do present a security problem.
- Many of the inactive doors are secured only by a light sliding surface bolt.
- These bolts should be replaced with lever extension flush bolts.
- Another solution is to permanently secure the inactive door.
- Dead bolt should be installed on the active door.

Types of Deadbolts



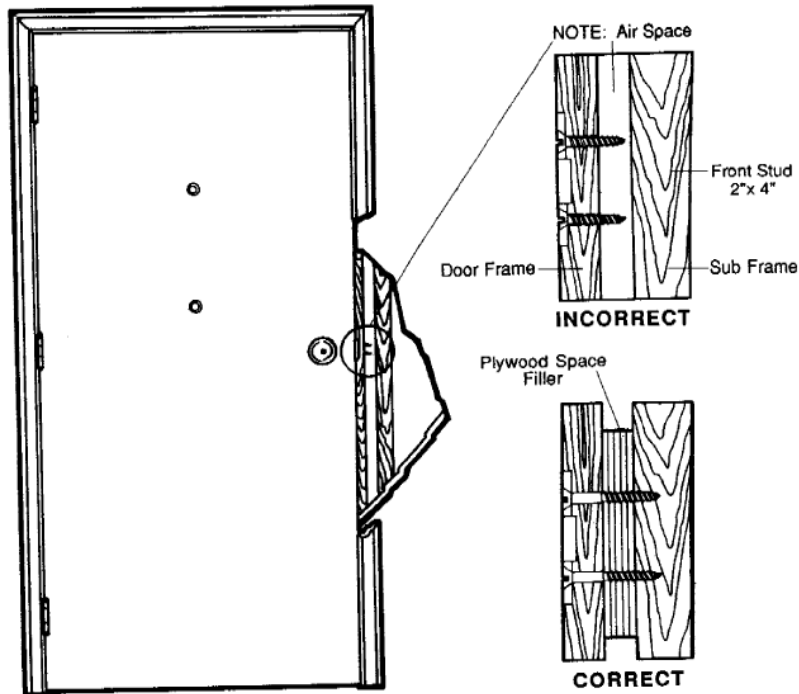
Single cylinder

- ▶ Single Cylinder – Thumb turn on the interior; advantage convenient when exiting in case of an emergency
- ▶ No thumb turn; most use keys on both sides
- ▶ Both have a rotating case hardened shroud that prevent them from being twisted with a pair of pliers.
- ▶ The most effective locks will feature bolts or throws that are at least one inch long.



Double cylinder

Doors Frames & Subframes



- ▶ The door frame wood is usually $\frac{3}{4}$ inches thick, that surrounds the door, often with an air space between the frame and sub frame, which consists of 2" x 4"s. It is not unusual for $\frac{3}{4}$ inches screws to be used to attach the hinges and strike plates of a door to the frame. This presents a situation where moderate force used against the locked door will splinter the frame, causing the strike plate to give way and allowing entry to be gained.
- ▶ Check to see if there is an air space between the frame and sub frame. If there is, use 2 to 3 inch fully threaded screws to secure the strike plate and hinges to the frame. This will anchor the hardware to the frame.

Metal Frame Door Reinforcement



Locking Accessories – Strike Plates

The weakest area of many good doors with good locks is the strike plate, jamb and frame.

- ▶ To strengthen any strike plate:
 - Mount it with screws at least three inches long to allow the screws to reach the stud.

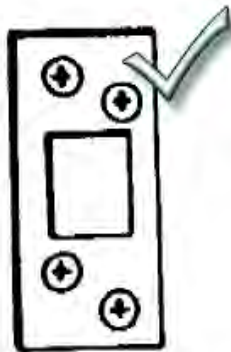


Figure A
(Extra security
deadbolt strike)

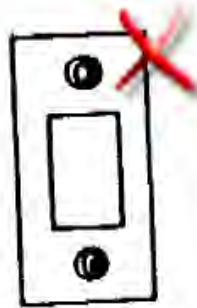


Figure B
(Standard dead-
bolt strike)



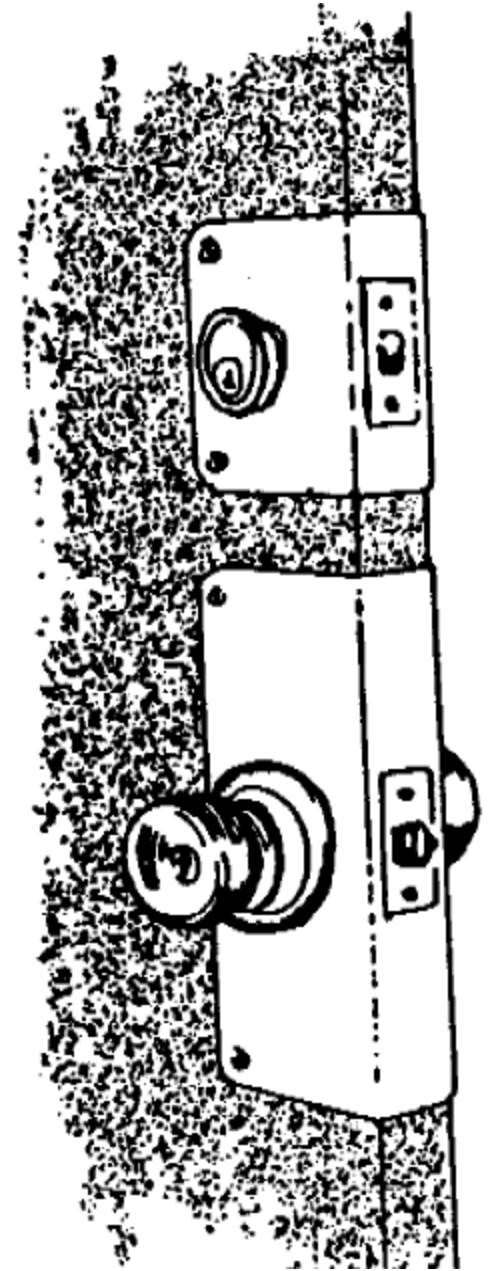
Figure C
(Standard spring
latch strike)



Figure D
(Box strike)

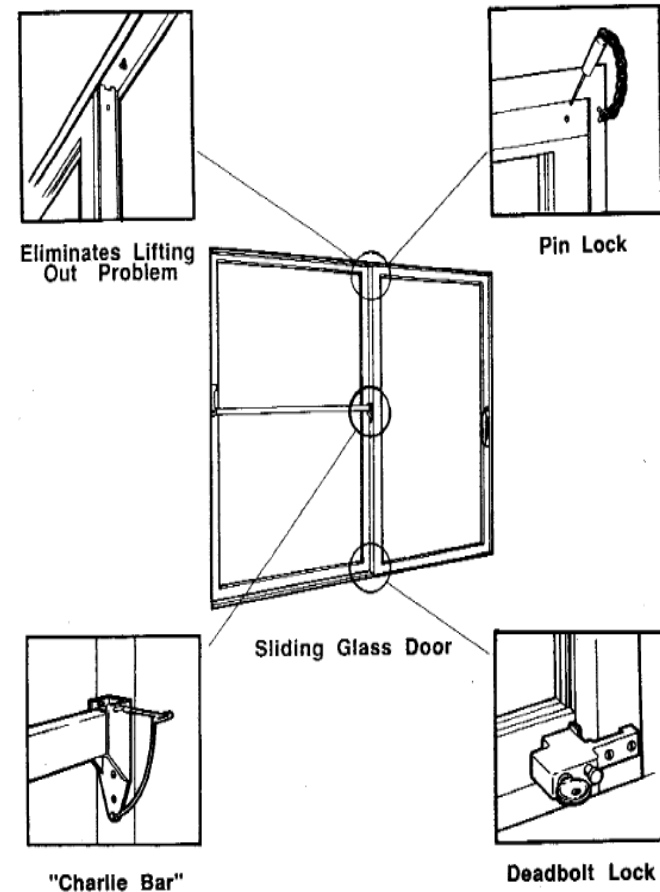
Locking Accessories – Protective Collar

- ▶ To further strengthen any door, add a protective collar of 16 to 20-gauge metal before installing the lock.
- ▶ Used primarily on solid core doors to support the installation of a quality lock and reduce the likelihood of the door being pried open.
- ▶ It also hide jimmy marks and short splits.



Windows & Sliding Glass Doors

- ▶ Windows & Sliding Glass Doors present a vulnerable area. Here's a few ways of securing these areas.





Window Thumb Lock





Sliding Lock

Pin Lock 



Orange County Sheriff's Office

Master Deputy Stanley Murray
Sector V and VI Command Staff–Crime Prevention

Orange County Sheriffs Office 407-254-7106
(24) Hours Emergency Number 9-1-1
(24) Hours Non-Emergency 407-836-HELP
Email: Stanley.Murray@ocsofl.com
Visit us on the Web: www.ocso.com



District 2 Neighborhood Leaders Meeting

Orange County's Green PLACE Program

April 20, 2023



Green PLACE Program

- **Green PLACE Mission: To preserve and manage environmentally sensitive lands, protect water resource lands and to provide a quality nature-based recreational outdoors experience for existing and future generations.**





Green PLACE Program

■ Green PLACE Program

- Initiated in 90's
- Preserved 23,400 acres
- Funding Sources:
 - Public Service Tax
 - Conservation Trust Fund
 - Grants
 - Partnerships
 - Donations





Green PLACE Program

- Land Management Operation & Maintenance
- Orange County owns 23,400 acres
- Actively manages 5101 acres:
 - Prescribed Fire
 - Invasive Species Control
 - Mowing
 - Forestry Management
 - Average Annual Cost: \$82/acre
- Remaining acreage is managed by our partners

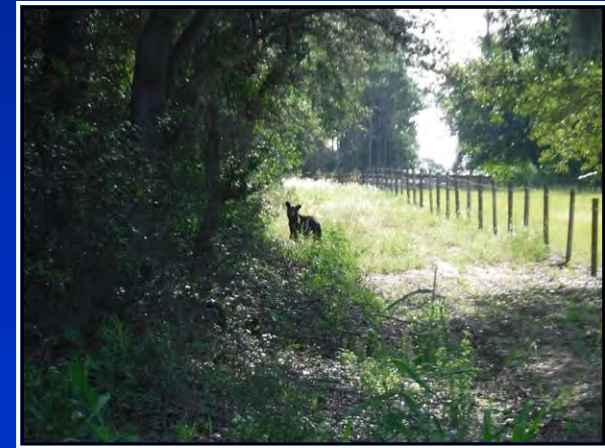




Green PLACE Program

▪ Public Benefits:

- Protect wildlife habitats
- Protect surface and groundwater resources
- Fosters a resilient community
- Fosters sustainable growth
- Fosters a healthy community





Green PLACE Program

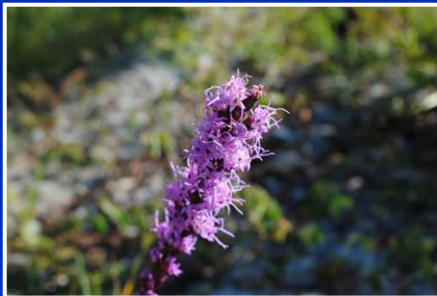
■ Nature-Based Recreation Properties:

- Eagles Roost
- Hidden Pond Preserve
- Isle of Pine Preserve
- Lake Lucie Conservation Area
- Long Branch
- Johns Lake Conservation Area
- Pine Lily Preserve
- Sandhill Preserve
- Savage Christmas Creek Preserve





Blooms





Wildlife

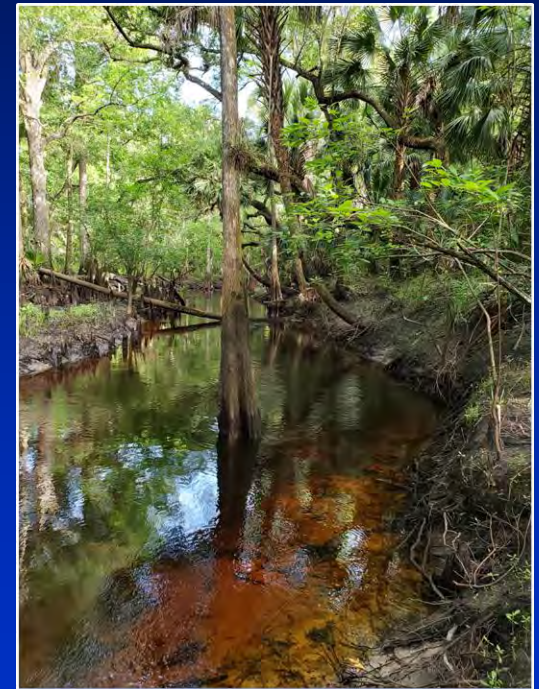




Green PLACE Program

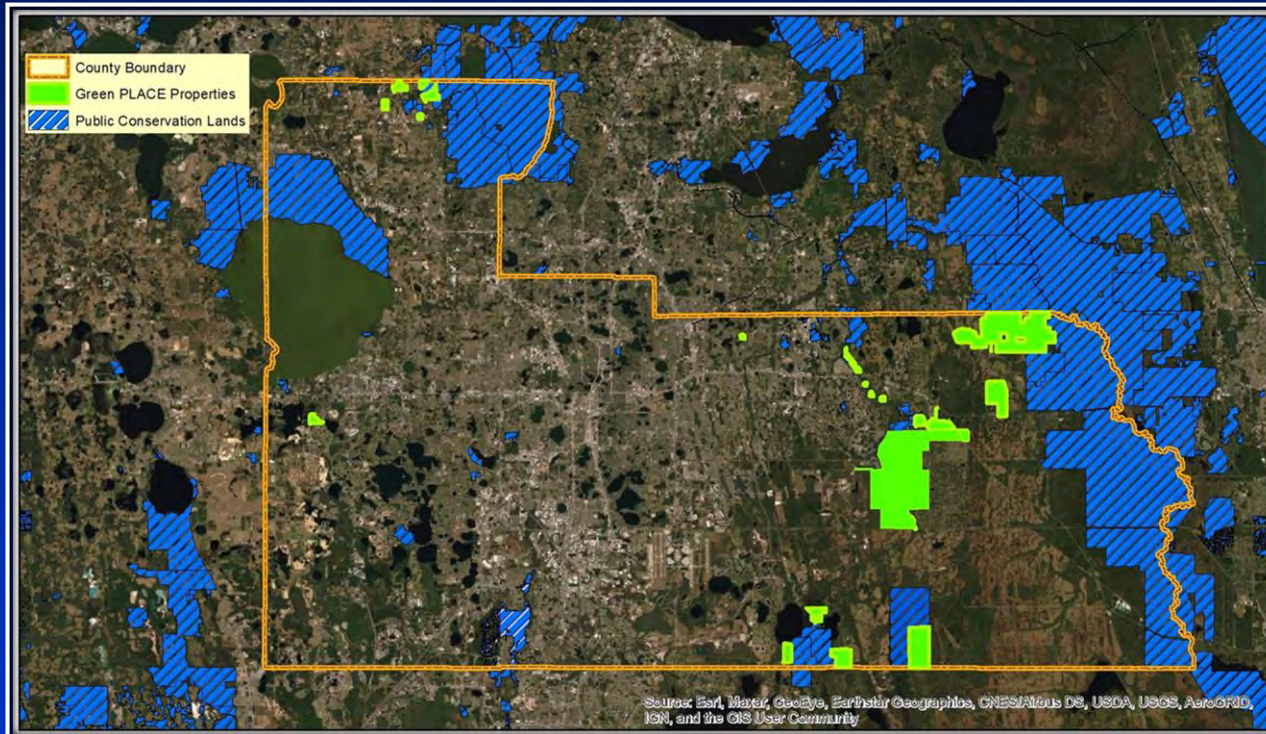
■ Preservation Efforts:

- Increase ESL lands by 2030
- Board approved 100M
- Evaluation Parameters
- Evaluation Process





Green PLACE Program





Conservation Area Authorization (CAA)

■ Chapter 15, Article X

- Authorization used to encourage removal of nuisance/exotic vegetation from a wetland area not adjacent to a shoreline
- Native plantings may be required after removal of nuisance/exotic vegetation to meet areal coverages and success criteria
- No access corridors allowed
- No application fee



Contact: WetlandPermitting@ocfl.net



Questions





Green PLACE Properties

Contact Green PLACE

GreenPLACE@ocfl.net

Beth.Jackson@ocfl.net

407-836-1481

3165 McCrory Place, Suite 200,

Orlando Fl 32803



Green PLACE Properties

Conservation Area Questions

Contact WetlandPermitting@ocfl.net

3165 McCrory Place, Suite 200,

Orlando Fl 32803



Orange County Public Works Department

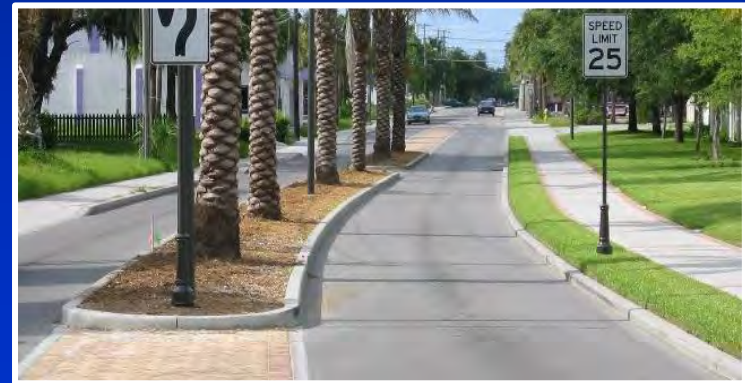
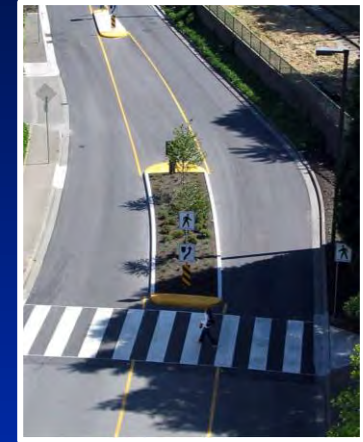
District 2
Neighborhood Leaders
Meeting Presentation

April 20, 2023



Presentation Outline

- Introduction
- The 4 E's
- Vision Zero
- Traffic Calming in District 2
- Key Projects in District 2
- Questions/Discussion





Presentation Outline

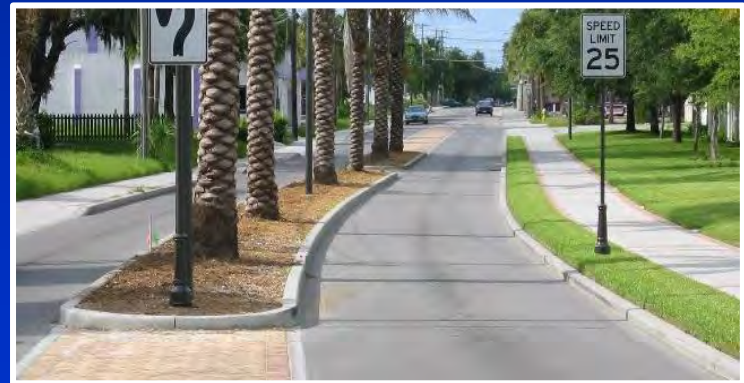
- Introduction
- The 4 E's
- Vision Zero
- Traffic Calming in District 2
- Key Projects in District 2
- Questions/Discussion





Presentation Outline

- Introduction
- The 4 E's
- Vision Zero
- Traffic Calming in District 2
- Key Projects in District 2
- Questions/Discussion





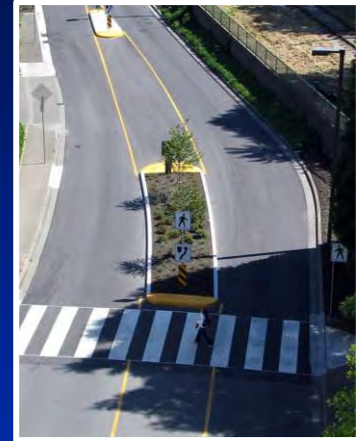
The 4 E's





Presentation Outline

- Introduction
- The 4 E's
- **Vision Zero**
- Traffic Calming in District 2
- Key Projects in District 2
- Questions/Discussion





Vision Zero

- Vision Zero is a strategy to eliminate all traffic fatalities and severe injuries, while increasing safe, healthy, equitable mobility for all.
- It's gaining momentum in major American and key cities and municipalities in Florida.
- The Safe System Approach first anticipates human mistakes and second reduces impact energy on the human body.





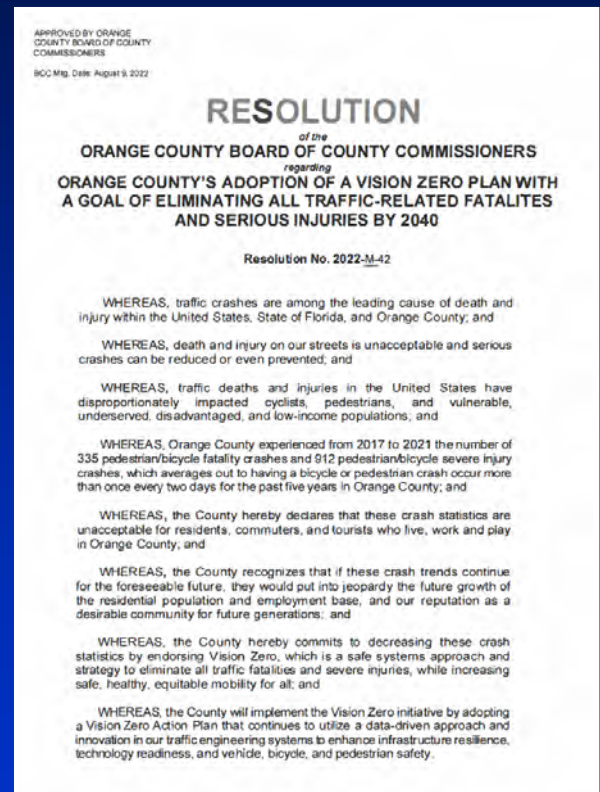
Vision Zero





Vision Zero

- The Orange County Board of County Commissioners approved a Vision Zero Resolution at the August 9, 2022 Meeting.
- The goal of Vision Zero is to eliminate all traffic-related fatalities and serious injuries by 2040.
- The County is currently working on a Vision Zero Action Plan in conjunction with Metroplan Orlando.





Vision Zero Strategies

RECTANGULAR RAPID-FLASHING BEACONS (RRFBs)



Rectangular rapid-flashing beacons (RRFBs) are active (user-actuated) or passive (automated detection) amber LEDs that use an irregular flash pattern at mid-block or uncontrolled crossing locations. They significantly increase driver yielding behavior.

RAISED CROSSWALKS



Raised crosswalks can serve as a traffic-calming measure and reduce vehicle speeds.

LEADING PEDESTRIAN INTERVALS (LPIs)



Leading pedestrian intervals (LPIs) at signalized intersections allow pedestrians to walk, usually 3 to 4 seconds, before vehicles get a green signal to turn left or right. The LPI increases visibility, reduces conflicts, and improves yielding.

ROAD DIETS



Road Diets can reduce vehicle speeds and the number of lanes pedestrians cross, and they can create space to add new pedestrian facilities such as pedestrian crossing/refuge islands.



Presentation Outline

- Introduction
- The 4 E's
- Vision Zero
- **Traffic Calming in District 2**
- Key Projects in District 2
- Questions/Discussion





Key Traffic Calming Projects

- Long Rd. - Evaluation of speed tables between Teresa Rd. and Cluster Dr.
- Evaluation for speed humps in the Holly Estates community.
- Added curve warning signs on Mohawk Dr. and Willow St. with reflective pavement markers and double yellow striping to increase conspicuity.





Tangerine Traffic Calming and Safety Study

- Dora Dr. and Sadler Rd – Replace existing Yield signs with Stop signs.
- Earlwood Ave. and Dora Dr. – Adding 25 mph posted speed limit sign and pavement markings.
- Dora Dr. and Beauclair Ave. and Clayton St. Adding pavement markings to enhance awareness of 90-degree curve.
- Lake St. form Dudley Ave. and Lake Ola Dr. Adding 25 mph pavement markings at intersections.
- Dora Dr. and Beauclair Ave – Adding a curve warning sign, a 15-mph advisory speed plaque and rumble strips.





Presentation Outline

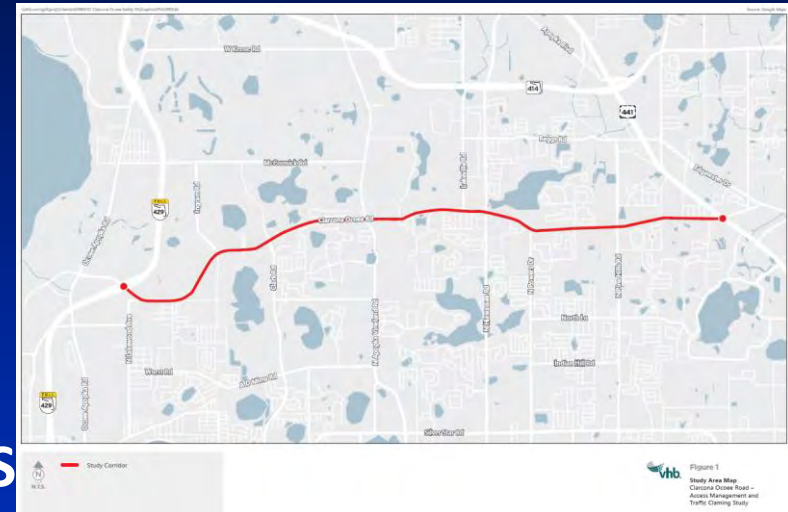
- Introduction
- The 4 E's
- Vision Zero
- Traffic Calming in District 2
- Key Projects in District 2
- Questions/Discussion





Clarcona Ocoee Road

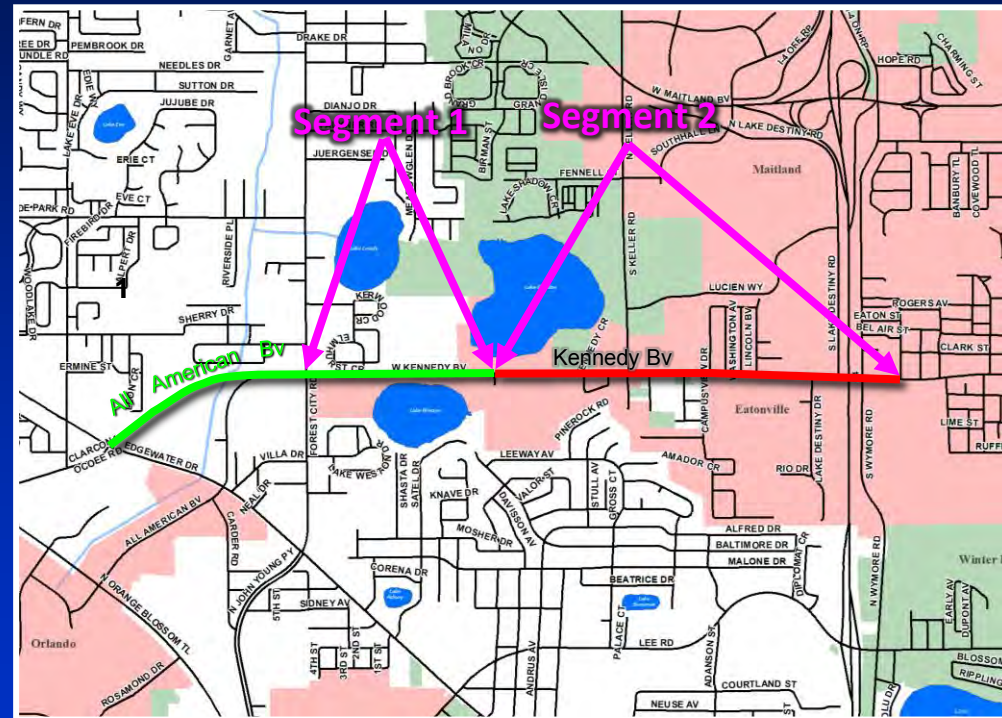
- The study covers 7.7 miles from Ocoee Apopka Rd to US 441.
- The scope of the study is to evaluate speed management and access management improvements.
- The potential addition of roundabouts are being studied at Fountains W Blvd, Arden Park Blvd, Grapevine Crest and S
- The study will be completed this summer and final design is scheduled for next fiscal year.





All American Blvd/Kennedy Blvd

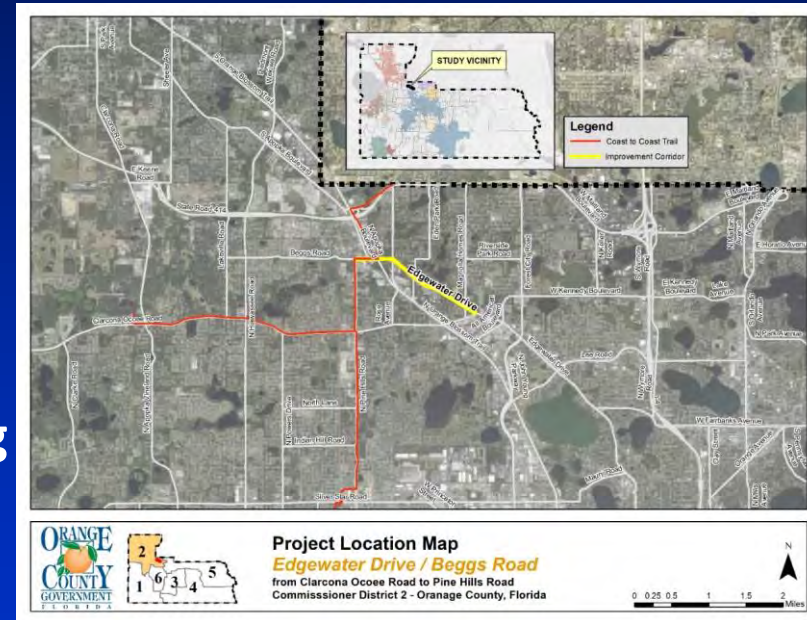
- All American Blvd will be a new four-lane roadway connecting to Clarcona Ocoee Rd.
- Kennedy Blvd will be widened to 4 lanes from Forest City Rd to just east of I-4.
- American Blvd and segment 1 of Kennedy Blvd is anticipated to start construction in late 2024.
- Section 2 of Kennedy Blvd is anticipated to start construction in late 2026.





Edgewater Drive

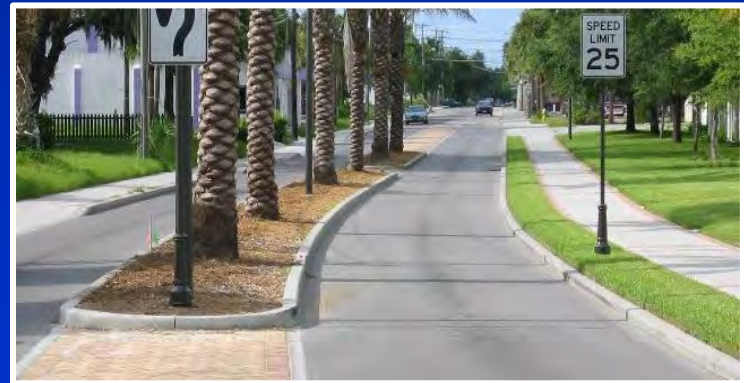
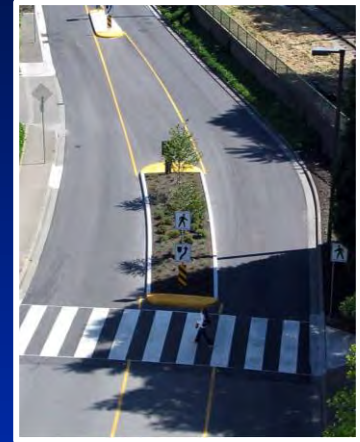
- The 2.0 mile segment is from Clarcona Ocoee Rd to Beggs Rd, and includes Beggs Rd from Edgewater Dr to Pine Hills Rd.
- A request for proposals for consultant services is in process for the Roadway Conceptual Analysis (RCA) Study.
- The project will address safety and accessibility challenges including providing improved connectivity for communities without pedestrian and bicycle facilities.
- A RAISE federal grant application was submitted earlier this year.





Presentation Outline

- Introduction
- The 4 E's
- Vision Zero
- Traffic Calming in District 2
- Key Projects in District 2
- Questions/Discussion



Clean-up Dates

May & June

8AM-11AM

1st Saturday-Southern

Meet at Lake Pleasant

Friday- Wekiwa Springs

at Votaw pop-up park

2nd Saturday- Lock

Meet at the former playground
location.

Saturday- North Pine Hills

Meet at Huntley Park



Next Quarterly meetings

2023 Quarterly Meeting Schedule:

3rd – Thursday, **August 17th** Subject: COY Strategies and Best Practices

Smaller meeting with area leaders and impacted neighborhoods

4th – Thursday, **November 16th** Subject: Awards Night & Corridor Safety

Please mark your calendars.

